



PRECEDENT HIP RESTRAINTS

PRECEDENT *OLDSTYLE* HIP RESTRAINT INSTALLATION

TABLE OF CONTENTS:

- Step 1** - Mark Hip Restraints
- Step 2** - Bore out existing Holes
- Step 3** - Mark Additional Hole Locations
- Step 4** - Drill Additional Holes
- Step 5** - Mount Driver Hip Restraint
- Step 6** - Cut away Internal Fins
- Step 7** - Secure Hip Restraint

REQUIREMENTS



Deluxe
DoubleTake
Cushions

SCALE HARDWARE GUIDE

Supplied hardware has been illustrated at a 1:1 scale for the ability to verify required lengths quickly and easily. Simply place the hardware on top of the illustration to ensure you are using the correct item and measurement.



PASSENGER

Precedent Oldstyle
Hip Restraints

DRIVER

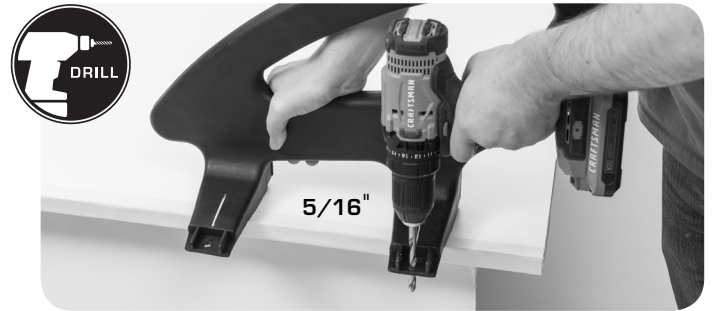
STEP 1 MARK HIP RESTRAINTS

Mark perpendicular lines on the base tops from the center of the mounting point holes on both the driver-side and the passenger-side Hip Restraints.



STEP 2 BORE OUT EXISTING HOLES

Bore out the existing holes to 5/16" in the driver-side & passenger-side Hip Restraint Bases.



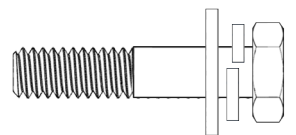
STEP 3 MARK ADDITIONAL HOLE LOCATIONS

- Temporarily insert the bolts **(A)** up through the bottom of the base.
- Set on a flat surface, measure from the center of the bolt out 1-1/4" and make a new hole mark on the white line.
- Repeat for remaining base tops including for the passenger hip restraint.



HARDWARE - SCALE 1:1

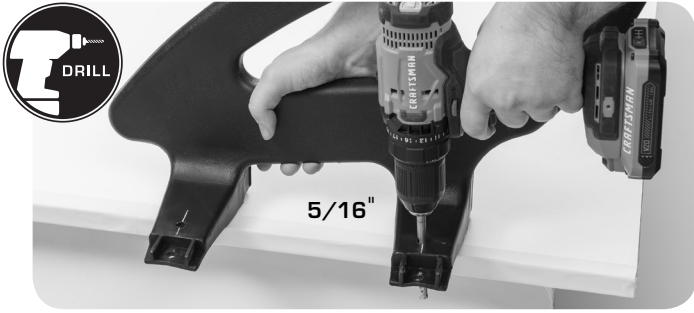
(A) x8



1/4" X 1-1/2" Hex Bolt - 1/4" Lock Washer - 1/4" Flat Washer

STEP 4 DRILL ADDITIONAL HOLES

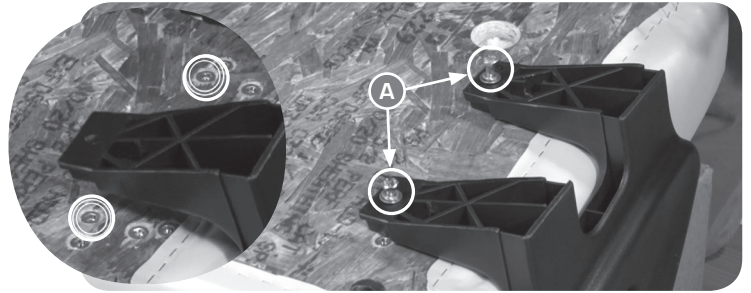
Drill a 5/16" hole completely vertical through the top wall on each of the Hip Restraint Bases. Repeat for Passenger Hip Restraint.



STEP 5 MOUNT DRIVER HIP RESTRAINT

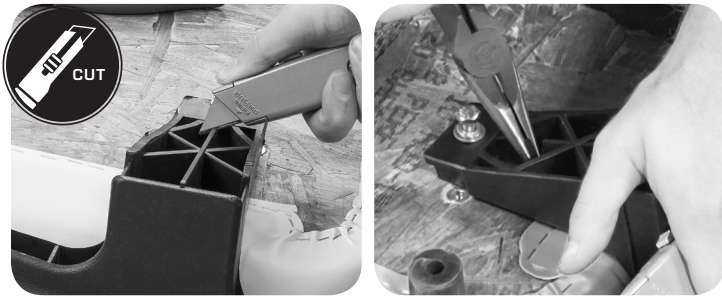
Position the Hip Restraint as shown (with the slope of the restraint facing to the front cushion towards seat cleat), using hardware (A).

NOTE: Do Not Fully Tighten hardware.



STEP 6 CUT AWAY INTERNAL FINS

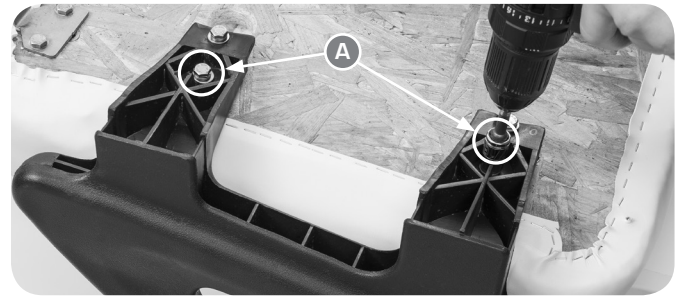
With a heavy-duty cutter, carefully and methodically, cut away and remove the internal fins (1/2" - 3/4" wide) from around the newly created installation holes.



STEP 7 SECURE HIP RESTRAINT

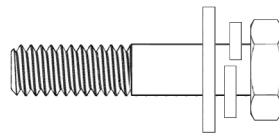
Secure with hardware (A). Fully tighten all Hardware. Repeat steps 5-7 for passenger hip restraint.

NOTE: Fully tighten hardware.



HARDWARE - SCALE 1:1

A x8



1/4" X 1-1/2" Hex Bolt - 1/4" Lock Washer - 1/4" Flat Washer